

Hitachi S-4500II FE-SEM



Main System Features:

- Originally installed April 1998
- Serial Number 7928-05
- Cold-cathode Field Emission Gun
- Quartz PCI 6.0 image capture software
- Secondary Electron Detector
- Robinson BSD detector
- GW Chamberscope
- TMC floating table
- PGT Prism EDX system with IMIX

Original Performance Specs:

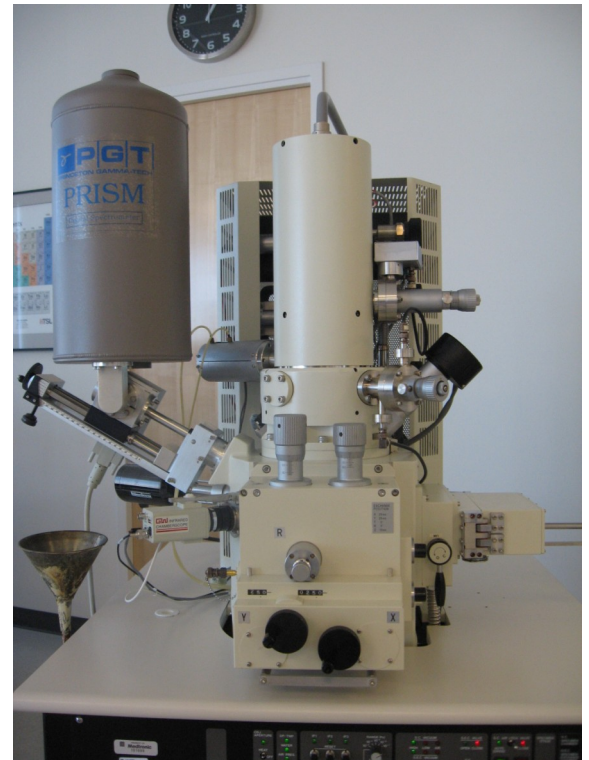
- 1.5nm at 30kV; 5nm at 1kV
- Magnification range: 20x to 500,000x
- Accelerating Voltage: 0.5 to 30kV

Stage & Specimen Handling:

- Loadlock
- 5 axis stage (XYZRT)
 - X travel: 0-100mm continuous
 - Y travel: 0-50mm continuous
 - Z travel: 3-33mm continuous
 - Rotation: 360° continuous
 - Tilt: -5° to 60° continuous
- 150mm dia. max specimen size

Facilities:

- Oil Diffusion Pump (ODP) main vacuum
- Two Backing (roughing) pumps
- Air Chiller for ODP



For more information, please contact:

Angstrom Scientific Inc.
PO Box 663
Ramsey, NJ 07446
Tel: (201) 760-2524
Fax: (201) 760-2525
info@angstrom.us
www.angstrom.us

